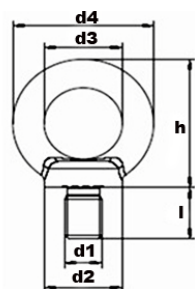


Šroub závěsný DIN 580 pozink



kód	Povrch	d1 mm	d3 mm	d4 mm	l mm	nostnost kg 0°/ 45 °	Ks bale;ni	Kg 100ks
4580.06	zn	M6	36	20	13	70/50	25	5,500
4580.08	zn	M8	36	20	13	140/95	25	6,000
4580.10	zn	M10	45	25	17	230/170	20	11,000
4580.12	zn	M12	54	30	20	340/240	15	18,000
4580.14	zn	M14	63	35	27	340/240	10	26,000
4580.16	zn	M16	63	35	27	700/500	10	28,000
4580.20	zn	M20	72	40	30	1200/830	5	45,000
4580.24	zn	M24	90	50	36	1800/1270	1	74,000
4580.30	zn	M30	108	60	45	3600/2800	1	166,00
4580.36	zn	M36	126	70	54	5100/3700	1	265,00
4580.42	zn	M42	144	80	63	7000/5000	1	403,00
4580.48	zn	M48	165	90	68	8600/6100	1	638,00